



PORT OF KIEL

SK NEWS

for customers and partners
of PORT OF KIEL
Issue April 2018

Dear friends of the port of Kiel,



We are entering a new cruise shipping season and, if ship registrations are anything to go by, it will surpass all previous seasons. With a view to this growth market we are investing in high quality handling and are building a second passenger handling terminal at the Ostseekai. In the cargo sector we are expanding our warehousing. We have already taken the new Shed 12 for Russian forestry products into service at the start of the New Year and in early summer we will complete the new Shed 7 pallet and baggage hall at the Ostuferhafen.

This spring we are taking part in two trade fairs - TransRussia and Break Bulk Europe - telling what Kiel has to offer by way of storage and shipment possibilities.

For more than six years Kiel Airport has been a part of the PORT OF KIEL Group. Here, our job now is to bundle our resources and win the upcoming local referendum. The airport is an important location factor for the Schleswig-Holstein state capital and we are backing efforts for its continued existence and its development into an airpark..

I hope you enjoy reading our latest SK News.

Sincerely,

Dr Dirk Claus
Managing Director

CRUISE SHIPPING 2ND TERMINAL SEASON OPENS FOR OSTSEEKAI

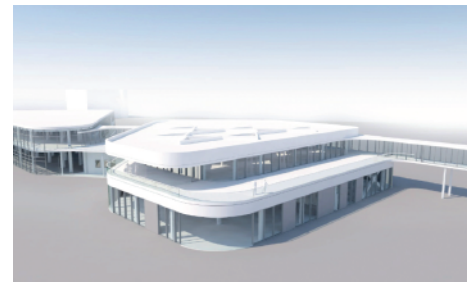
Fred. Olsen Cruise Lines' "Boudicca" arrives via the Kiel Canal at the Ostseekai Terminal on April 6th as the first ship of the new cruise shipping season. About 800 English-speaking passengers are expected. This year's cruise shipping season will see 32 different cruise ships make a total of 166 calls in Kiel.



The port will record significantly increased arrival and passenger figures. Total ship tonnage will increase to more than 11 million GT for the first time and as many as 600,000 passengers are expected to board or leave cruise ships.

The most frequent visitors will be the ships of the AIDA/Costa shipping company, TUI Cruises and MSC. Five ships belonging to AIDA will be among those calling at the port. The biggest ship of the season is the "MSC Preziosa" of 139,000 GT which will be seen on the Kiel Fiord for the first time on April 28th. Highlights of the season will be the presentation of the latest ship in the TUI Cruises fleet - the new "Mein Schiff 1" - on April 27th as well as maiden visits to the port of Kiel by a further seven ships, among them Cunard's "Queen Victoria".

A second handling terminal for cruise ship passengers and their luggage is being built at Kiel's Ostseekai. The second terminal will make it possible to separate out individual operational processes. Whereas previously two ships were handled by just one terminal at the Ostseekai, in future every ship will have its own handling terminal. Construction starts in August this year. Inauguration is scheduled for next spring at the start of the 2019 cruise shipping season.



Planned is a 3,700 m² two-storey terminal building designed and planned by architects eins:eins Hillenkamp & Roselius within the framework of a co-operative workshop process at the Ostseekai also involving the architects Ladwig. The new structure is being built as an integrated northern extension of the existing

terminal building with connections on both levels. The new building's frontage picks up on existing surroundings and impresses with the transparency afforded by large glass surfaces. Functionally, the new building is based on the existing terminal structure. While baggage handling takes place on the ground floor, the upper floor will be reserved for passengers and check-in procedures.

NO DIESEL TRAVEL BANS

The latest decisions by the Federal Administrative Court will not have any negative effects on the port of Kiel's hinterland traffic services. The court underscored that, even in cases where local travel bans are under discussion in connection with the setting up of Clean Air plans, any measures taken must always be proportionate.



It would appear, from comments made so far by the Schleswig-Holstein Environment Ministry and the City of Kiel, that truck transport to and from the port will remain unrestricted.

FUEL DEPOT AND BUNKER STATION

The handling of ship fuels at the bunker station in Kiel-Wik has increased significantly. The terminal, operated by the UTG (Unabhängige Tanklogistik GmbH) is strategically located at the eastern end of the Kiel Canal just before it reaches the locks at Kiel-Holtenau. From here not only ships passing through the canal can easily be supplied but also German and southwestern Scandinavian ports. The fuel depot boasts handling facilities for both ocean-going and inland ships drawing maximum 9.5 m at a 450 m quay. The capacity of the facility is 32,200 cubic metre and individual tanks are filled with different fuels.

Direct bunkering and bunker boat outsourcing, for example of gas oil, can be carried out with a capacity of up to 250 cubic metre/hour. The handling of ocean-going ships at the bunker station is available around the clock, seven days a week.

TRANSRUSSIA IN MOSCOW

This spring the PORT OF KIEL is on display at TransRussia, the international trade fair for transport, transit and logistics in Moscow. You can meet representatives of the PORT OF KIEL on the stand of Hafen Hamburg Marketing (HHM) – Stand E 216 in Hall 15 - between April 17th and 19th and learn more about the possibilities of shipping from Kiel to St. Petersburg and via Klaipeda.



Between the 29th and the 30th of May, the PORT OF KIEL is also exhibiting on Stand 1109 at another trade fair - Break Bulk Europe in Bremen - where the focus is on heavy cargo handling. Kiel can offer customers first-class infrastructures and reliable service whether they are shipping machine parts, generators or even autoclaves. New in the Ostuferhafen are deliveries by barge through the Kiel Canal with on-transport by ocean-going ship to Russia and into the Baltic region.

AIRPORT DECISION

A referendum is being held in Kiel to determine the future of the local airport – which belongs to the PORT OF KIEL. The referendum is being held on May 6th and all Kiel citizens will be asked to decide on the facility's future. They are being asked the question: "Are you in favour of the airport being closed?"



A majority of the Kiel Council - an elected political body representing all Kiel citizens - says "NO" to closure and is in favour of long-term continuation of operations at the airport, which handles 15,000 flight movements a year. Among the reasons for the retention of the airport are:

- The preservation of existing jobs and the creation of additional jobs in a future airpark.
- Favourable economic development. The airport will soon pay for itself without city financial subsidy.
- The airport will save lives because organ transport and ambulance flights can be carried out safely and swiftly.
- Airport and habitation are not mutually exclusive. In Holtenau-Ost 1,400 apartments are being built on the site of the former MFG 5 naval flying base.
- The airport is a regional location factor and reinforces the function of Kiel as a federal state capital.

And, finally: where are visiting German League football teams expected to land when they come to Kiel to play?

BLUE PORT MAGAZINE

The new magazine of the PORT OF KIEL is devoted entirely to maritime environmental awareness and to an ecological future. BLUE PORT KIEL symbolises the union of sustainability and economic performance.



On a total of 76 pages, innovative strategies and initiatives designed to reduce the environmental impact of ships, ports and hinterland transport services are presented and their backgrounds examined.

If you would like to know more about BLUE PORT KIEL email market-ing@portofkiel.com to receive your own personal copy.

IMPRINT

SEEHAFEN KIEL GmbH & Co. KG
Schwedenkai 1 | 24103 Kiel | Germany
T +49 (0)431 9822104 | F +49 (0)431 9822410
presse@portofkiel.com
www.portofkiel.com